

# Epson EcoTank ET-2800

## Sublimation and Pigment Printer





## Reference Sheet

### **Approved Materials**

Fabric: Cotton or Polyester for Pigment Ink & Transfer Paper

Fabric: Polyester (90-100%) and Sublimation Blanks for Sublimation Ink & Transfer Paper

Items that work best with sublimation

Sublimation Mugs

Sublimation Hats

Aprons(light colored)

T-shirts (light colored)

Mouse Pads

Canvas bags (light colored)

Aluminum sublimation blanks

Max Design Area of Heat Press

9" x 9"

### **Machine Accessories**

Scissors

Parchment Paper

Pigment ink or Sublimation ink transfer paper

Nomex Heat Felt

Gloves

Ruler to T-Square

Heat Tape

Telfon Sheet

Cricut EasyPress 2 or Cricut Mug Press

Epson EcoTank ET-2800 with either Pigment or Sublimation Ink

Software: Adobe Illustrator, Inkscape



### **Important Safety Information:**

The heat press achieves temperatures of 400 °. Be careful and use the gloves provided when interacting with anything fresh off of the heat press or the heat press itself when hot, mugs especially retain heat when coming out of the press.

### **Workflow:**

1. Acquire/design images
2. Edit/adjust/size images
3. Determine the content of the material being pressed (cotton or polyester)
4. Select the correct printer (ink type) and corresponding transfer paper
  - i. Pigment Ink = Cotton or Cotton Blends
  - ii. Sublimation Ink = Polyester or other synthetic materials
5. Print images on transfer paper – mirrored or backwards
6. Cut out images
7. Turn on heat press and/or mug press
8. Set timer
9. Carefully arrange material on heat press base
10. Quickly press T-shirt 2-3 seconds to get rid of moisture and wrinkles
11. Place printed, cutout image on material upside down
12. If using sublimation transfer paper tape down with heat resistant tape
13. Cover all with the protective Teflon sheet
14. Press material
15. Remove from press
16. Remove/peel off transfer paper from material while hot
17. If using Pigment transfer paper, stretch the material while it is still warm in all directions.

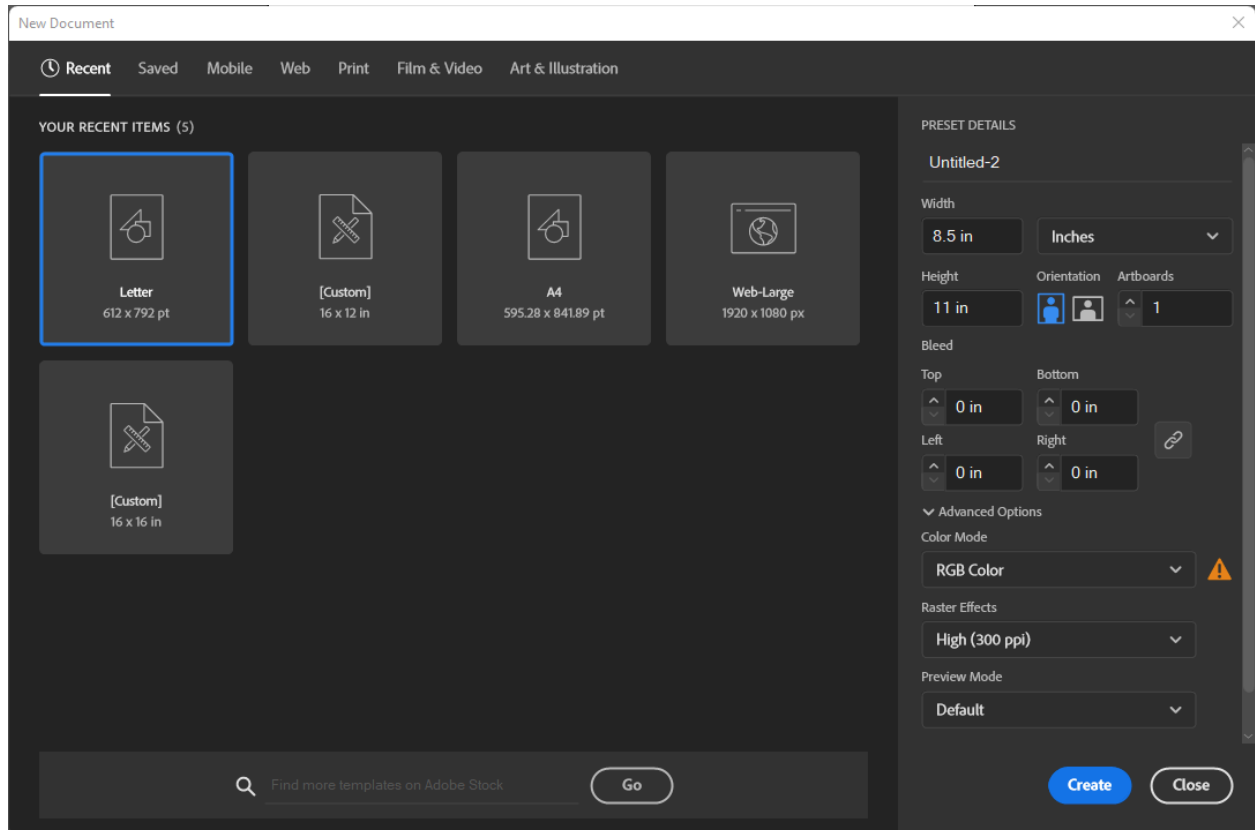


## Heat Press Time, Temperature and Pressure Settings

| Surface/Material         | Transfer Paper | Press time | Temp         | Pressure        | Tips/Comments   |
|--------------------------|----------------|------------|--------------|-----------------|---|
| Cotton/Blend             | Pigment        | 15-25 sec. | 365 °        | High            | Pre-press shirt for 3-5 seconds to eliminate moisture.  |
| Polyester                | Sublimation    | 35-40 sec. | 400 °        | Light to Medium | Pre-press shirt for 3-5 seconds to eliminate moisture. Tape down design with heat tape. Use Teflon pillow underneath garment to avoid ghosting. |
| Polyester—another option | Sublimation    | 35-55 sec. | 385° - 390 ° | Light           | Try this range of time and temp. settings to avoid the press marks.   |
| Mousepads                |                | 45 sec.    | 400 °        | Medium          |   |
| Mugs                     | Sublimation    | 6~ Min     | N/A          | N/A             | After pressing set mug aside on heat pad for at least 15 minutes, use gloves  |

## Adobe Illustrator Page Setup

When opening you design up in Illustrator, you will first need to set up the template, you will want to make the design 8.5” by 11” inches, and set “Color Mode” to RGB, as shown below



## Opening your design

To open your design in Illustrator, after setting up the template you will just navigate to the top left of the page under the file tab, you will find “Open” this will let you browse the computer for your image to bring into illustrator (it will likely be in the “Desktop” or “Downloads” folder).



## Preparing to Press

Pigment transfer paper:

- o Cut out the images as close to the edges of the ink as possible. If available, use a cutting machine or x-acto knife with a straight edge on a cutting matt for straight and uniform edges. This is especially good for type blocks.

Sublimation transfer paper:

- o Cutting close to the image with the sublimation transfers is not as important as with the pigment transfer paper, but it's good to be aware that the edge of the sublimation transfer paper can create a permanent indentation when pressed.

Set the press according to the instructions for the type of material and transfer paper, as shown on the chart on the last page. This will require three settings: temperature, pressure and time for each T-shirt or other item you are pressing on. Pressure is controlled by you physically pressing down on the heat press, it is not too exact it may take a try or two to nail it down.

**Please Note:** Pigment transfers require High pressure. Sublimation on polyester requires much less pressure in order to avoid permanent indentations on the fabric Pre-press the material first before applying the transfer. This gets rid of moisture that could prevent a good transfer of ink and also eliminates wrinkles. Timing for this process is just a second or two.



## **Preparing the Press Cont.**

Lay the transfer onto the spot you want the design to appear on the T-shirt or other material ink-side down. See Figure 1 and 2 for placement guidance.

Place a Teflon sheet on top of the T-shirt to keep the top platen free of ink that could spoil subsequent pressings. The Teflon will also keep the machine from accumulating ink and dust, and Teflon is easy to wipe clean. Lock the press and follow the manufacturer timing instructions for each type of material being used.

## **Tips**

Use a potholder or gloves to hold down the hot T-shirt material while lifting off the transfer paper

## **Warning:**

Never leave a heat press on unattended.

The printer that corresponds to the material you will be pressing the design onto, i.e. pigment ink printer to cotton, polyester or blends and sublimation ink printer to polyester only (can be a blend but a blend that has a high percentage of polyester will be most successful and long lasting)



### **Guidelines For Pigment Inkjet Process**

Cut out the design as close as possible since a plastic film will surround the design/artwork. After pressing, remove transfer paper while hot, then stretch the fabric in all directions while still warm for best results. Wash in cool water with a T-shirt turned inside out. Hang to dry.

### **Guidelines For Sublimation Inkjet Process**

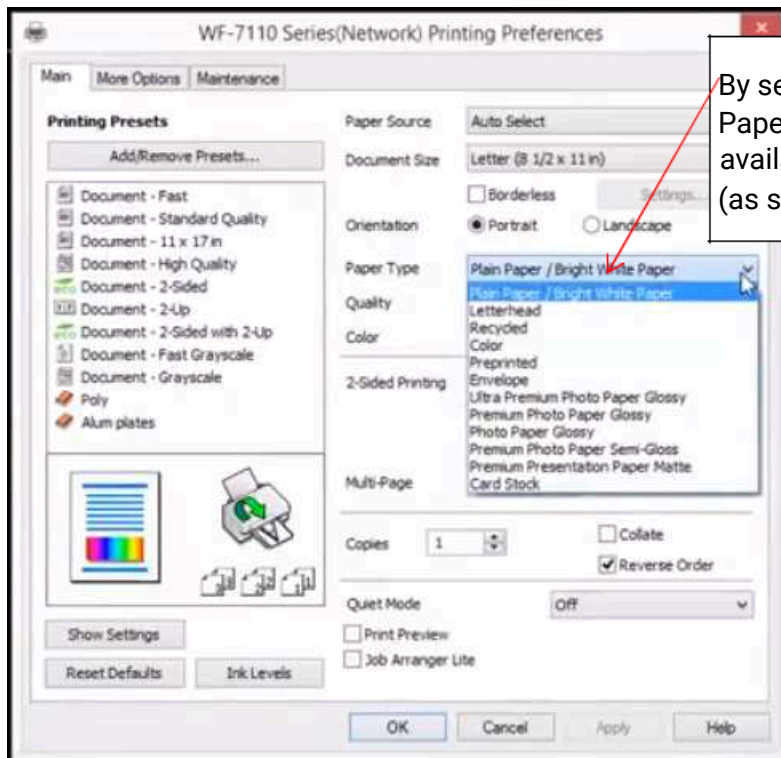
Use heat resistant tape to hold down transfer paper as it doesn't stick and could move when lifting the press after the heating process. This could result in ink dropping on areas where you don't want it

**Important note: If your print comes out correctly the design should be mirrored and discolored from your design, this is normal and should show up correctly on your intended object.**

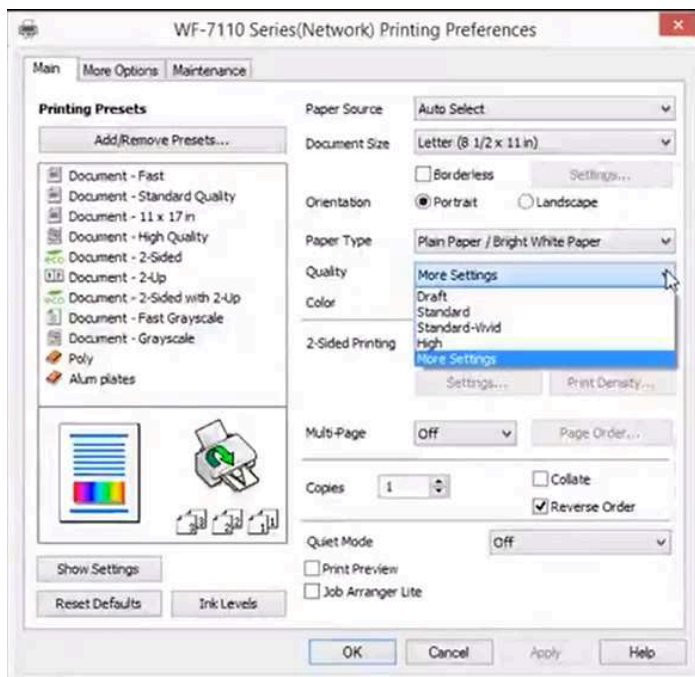


## When Printing

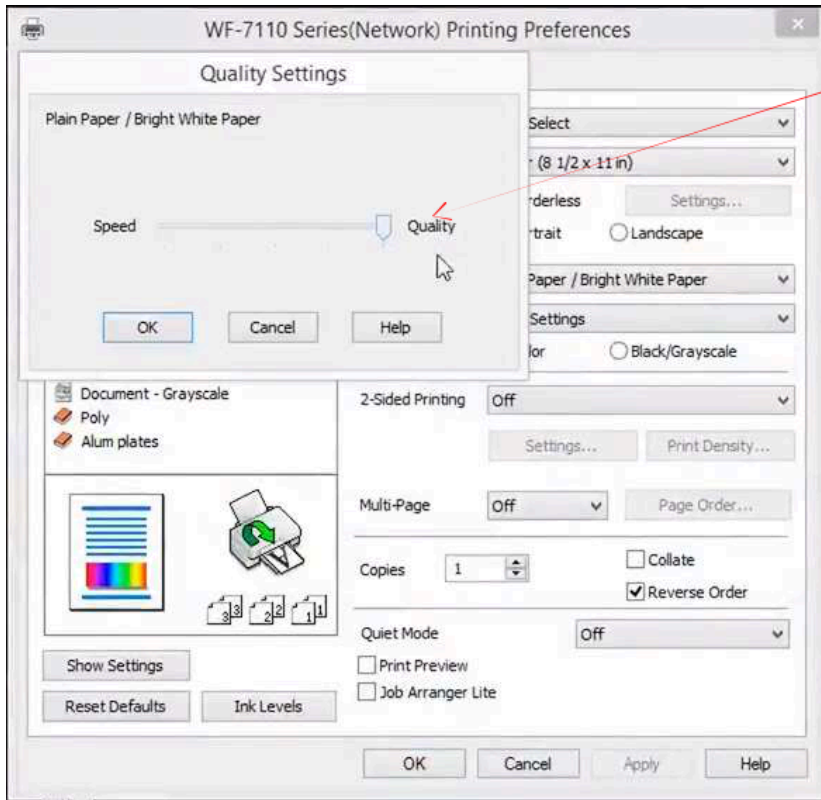
After you have finished your design on either Adobe Illustrator, Inkscape, or any other image editor there will be settings you need to alter to best print with the sublimation or pigment paper and ink.



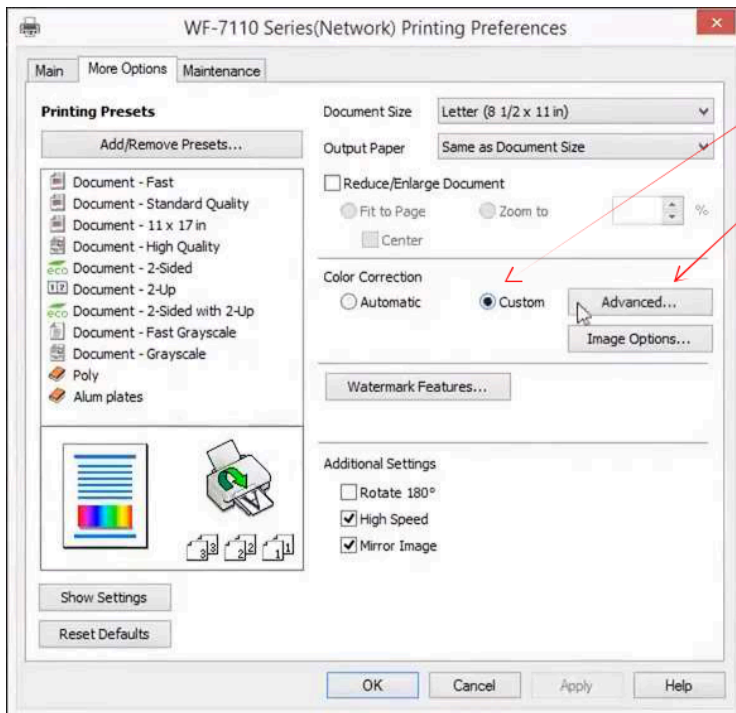
By setting the Paper type to Plain Paper you have more options available under the Quality selection (as shown in the illustration below)



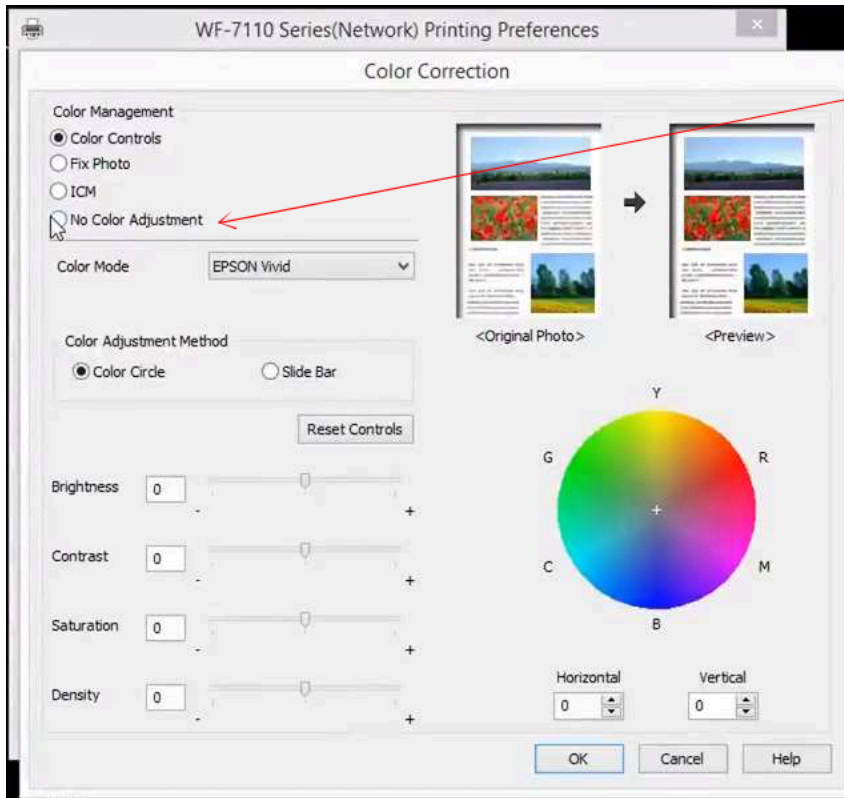
Select "More Settings"  
Under the quality tab



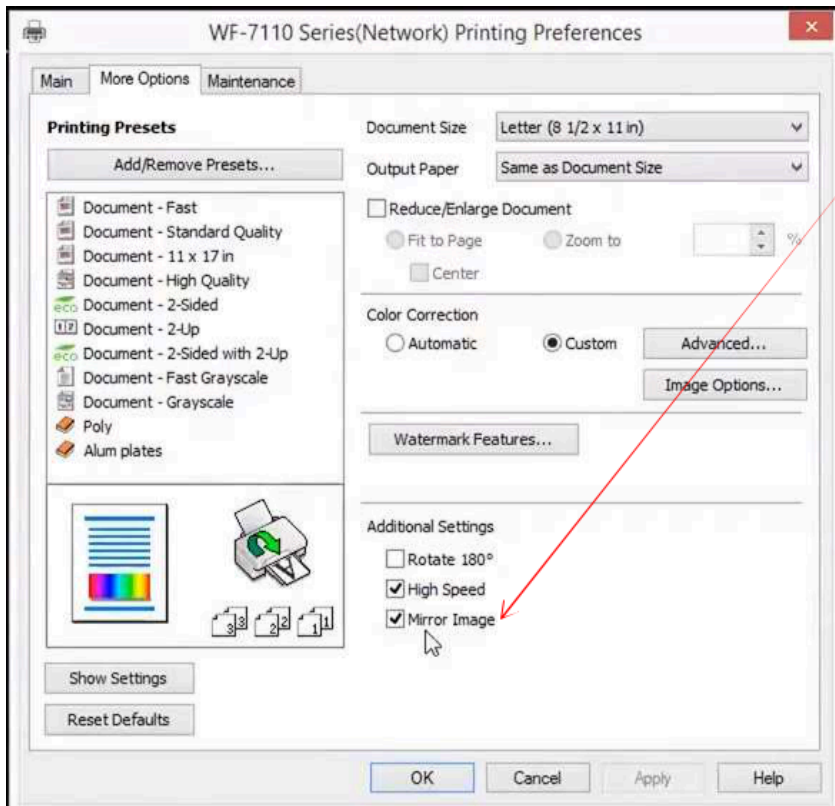
Move the slider to the highest quality



Under "Color Correction" select the "Custom" button Then click on the "Advanced" button.



Here you can select no color adjustment to maintain the color from the image software



Here you will select mirror image, you want your image to be mirrored so when you press it, it is displayed correctly